



Production Photos  
- 2022 -



Closed Type Cooling Tower  
Power Plant Application



Closed Type Cooling Tower  
Power Plant Application



HOT DIP GALVANIZED COIL  
Tested at 25mPA



HOT DIP GALVANIZED COIL



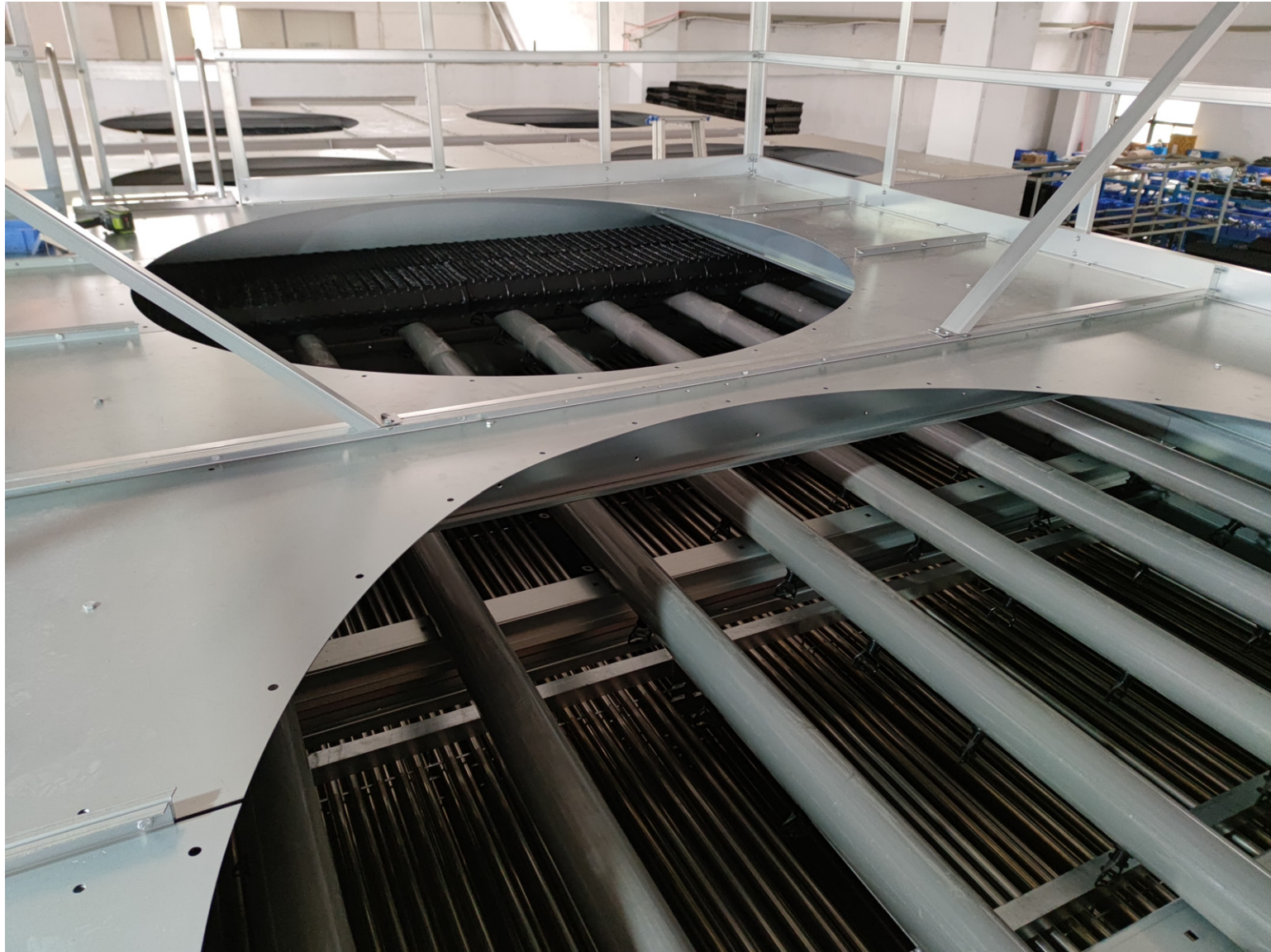
STAINLESS STEEL 304 COIL  
Laser Welding



STAINLESS STEEL 304 COIL  
Laser Welding



SST 304 COIL  
Testing



Top View of Closed Type  
Cooling Tower



Galvanized Steel Casing  
Zinc Coated 700 gr/m<sup>2</sup>



Galvanized Steel Casing  
Zinc Coated 700 gr/m<sup>2</sup>



Galvanized Steel Casing  
Zinc Coated 700 gr/m<sup>2</sup>



Galvanized Steel Casing  
Zinc Coated 700 gr/m<sup>2</sup>



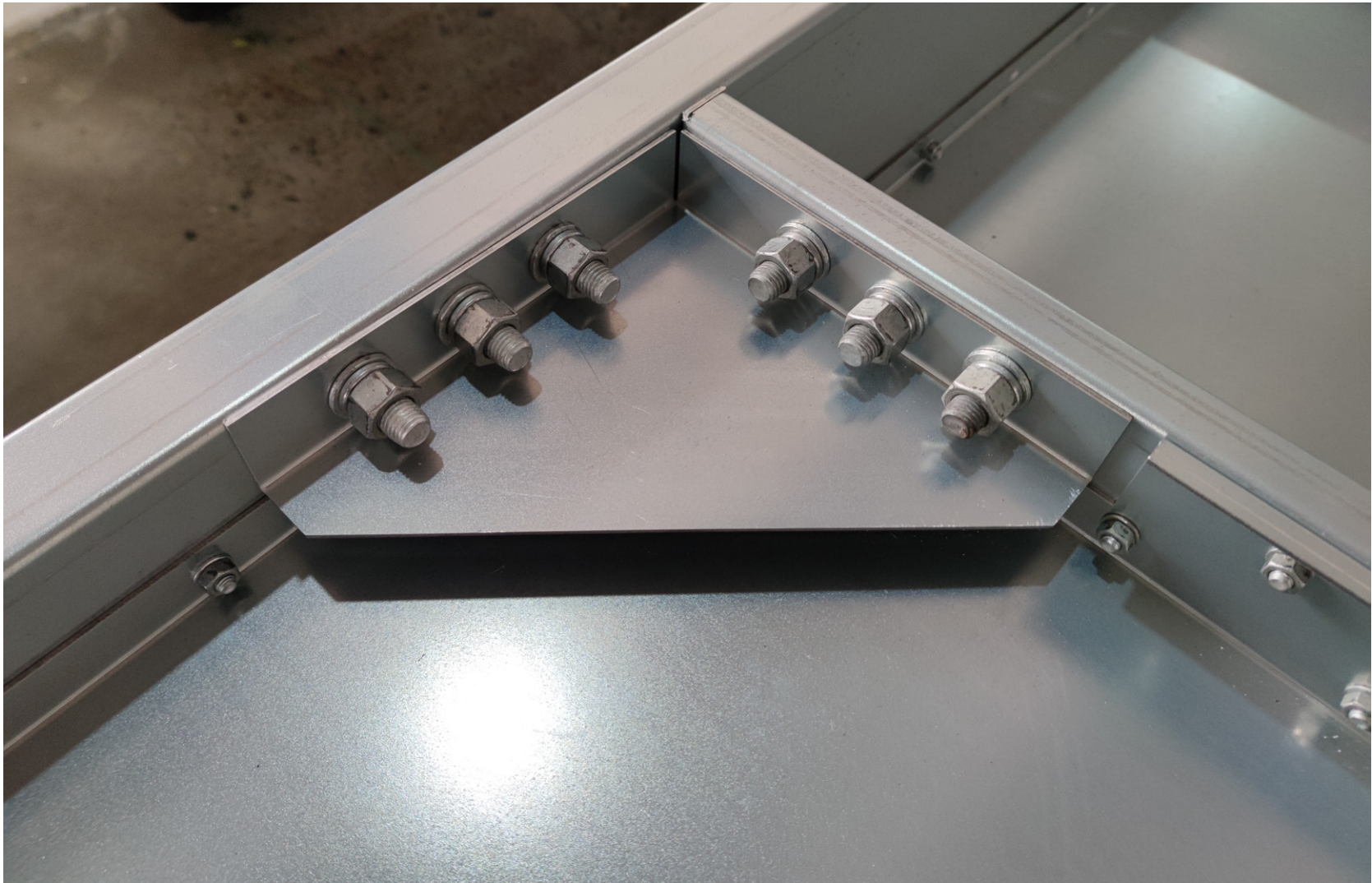
Galvanized Steel Casing  
Zinc Coated 700 gr/m<sup>2</sup>



Galvanized Steel Casing  
No welded at connection point



Galvanized Steel Casing  
Nut and bolt connection



Galvanized Steel Casing  
Nut and bolt connection



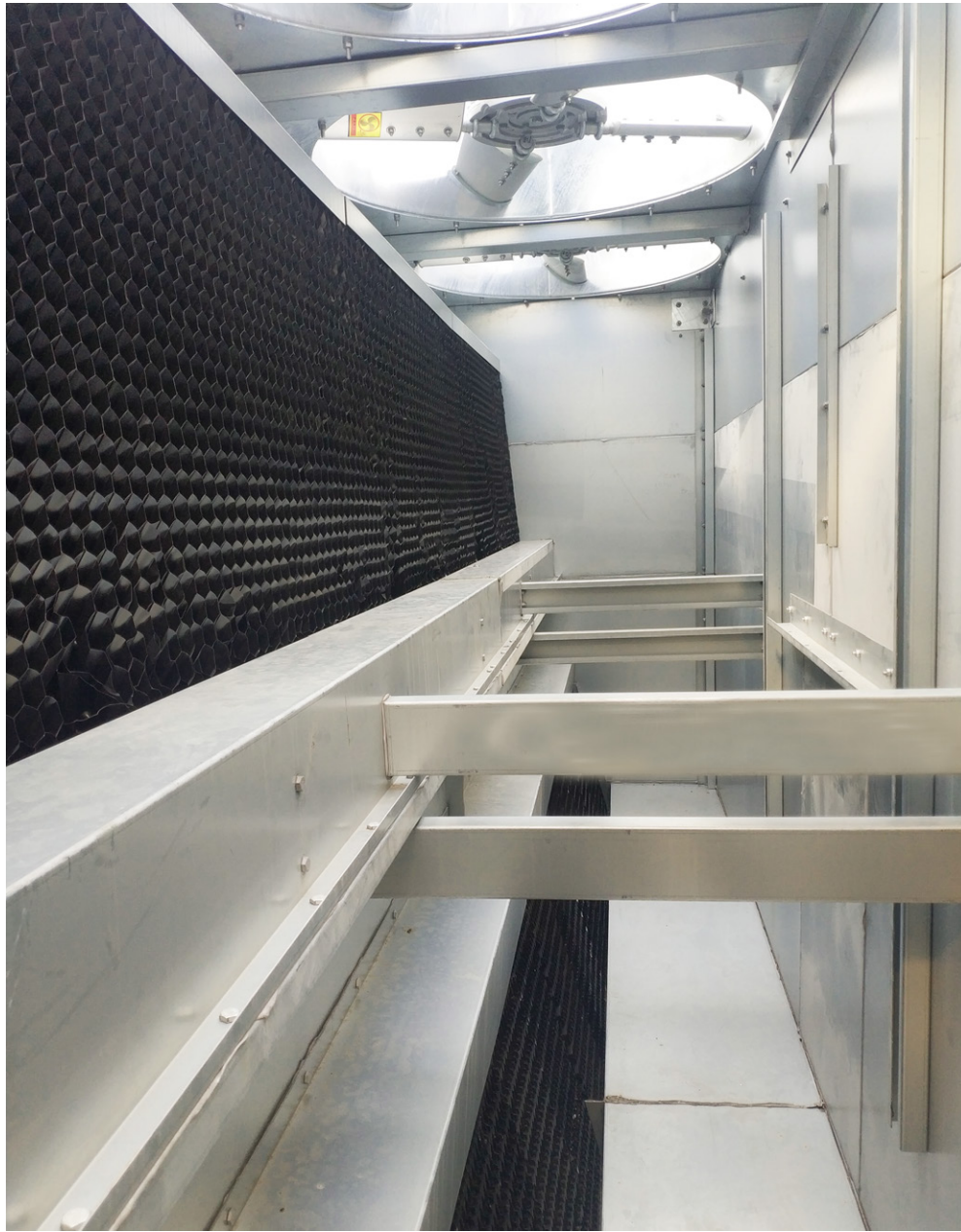
STAINLESS STEEL 304 COIL



Closed Type Cooling Tower  
Galvanized Steel Casing  
Zinc Coated 700 gr/m<sup>2</sup>



Maintenance door



Inside view of Cooling Tower